



REGISTER OF HERITAGE PLACES

DRAFT – Register Entry

1. **DATA BASE No.** 5568
2. **NAME** *Princess Margaret Hospital for Children (fmr), Subiaco* (1909, 1913, 1921, 1944, c.1950)
FORMER NAME (or OTHER NAMES) Chief Resident Medical Officer's Quarters, Old Outpatient's Building, Multi-faith Centre
3. **LOCATION** Thomas Street and Hay Street, Subiaco
4. **DESCRIPTION OF PLACE INCLUDED IN THIS ENTRY**
Part of Reserve 53329 comprising portion of Lots 500 & 502 on Deposited Plan 419081 being part of the land contained in Crown Land Title Volume LR3172 Folios 41 & 43 together as defined in HC Curtilage Map P5568-1.
5. **LOCAL GOVERNMENT AREA** City of Subiaco
6. **CURRENT OWNER**
State of Western Australia (Development WA)
7. **HERITAGE LISTINGS**
 - Register of Heritage Places: *Godfrey House* 26/08/2003
 - National Trust Classification: _____
 - Town Planning Scheme: _____
 - Municipal Inventory: *Godfrey House* 28/02/1995
Old Outpatients Building 24/09/2002
 - Register of the National Estate: _____
 - Aboriginal Sites Register: _____
8. **ORDERS UNDER SECTION OF THE ACT**

9. **HERITAGE AGREEMENT**

10. **STATEMENT OF SIGNIFICANCE**

Princess Margaret Hospital for Children (fmr), Subiaco, consisting of Old Outpatients' Building (1909) a timber framed and clad hospital building with a custom orb profile zincalume roof designed in the Federation Bungalow style, and Godfrey House (1913), a two storey painted brick and iron residential building in the Federation Queen Anne style, has cultural heritage significance for the following reasons:

the place includes rare surviving remnants that demonstrate the earliest phase of development of Perth's first hospital for children;

the place contains rare and intact examples of the medical facilities, and purpose built residential accommodation for doctors;

the place demonstrates the growing public concern and support for matters of health and childcare in the early Twentieth Century;

Godfrey House is a fine example of a two storey residential building exhibiting the characteristics of the Federation Queen Anne style, which is skilfully designed to give separate identities to the two residential zones accommodated within the building;

the Outpatients Building is a modest and picturesque example of the application of the Federation Bungalow style to a hospital building;

the large, ornate design of Godfrey House is a physical demonstration of the status accredited to Chief Medical Officers;

the place is an example of a building designed by the Public Works Department of Western Australia, under the supervision of Chief Architect, Hillson Beasley, and an example of the work of Perth Architect J Ochiltree; and,

the place has value for former patients and staff of Princess Margaret Hospital.

Recent landscape treatments at Godfrey House and paving are considered to be of little cultural heritage significance and framed additions dating from circa 1980 are considered to be intrusive.

The hard and soft landscaping surrounding Old Outpatients Building, apart from the Canary Island Palms, has little significance. The paved north verandah floor, fences and paths have no significance. The contemporary kitchen and bathroom fit-outs, services such as air conditioning and plumbing are intrusive.



HERITAGE
COUNCIL
OF WESTERN AUSTRALIA

REGISTER OF HERITAGE PLACES

DRAFT – Assessment Documentation

11. ASSESSMENT OF CULTURAL HERITAGE SIGNIFICANCE

Cultural heritage significance means aesthetic, historic, scientific, social or spiritual value for individuals or groups within Western Australia.

In determining cultural heritage significance, the Heritage Council has had regard to the factors in the *Heritage Act 2018* and the indicators adopted on 14 June 2019.

PRINCIPAL AUSTRALIAN HISTORIC THEME(S)

- 3.26.2 Providing hospital services
- 4.3 Developing institutions
- 5.2 Organising workers and work places

HERITAGE COUNCIL OF WESTERN AUSTRALIA THEME(S)

- 404 Community services and utilities
- 408 Institutions

11(a) Importance in demonstrating the evolution or pattern of Western Australia's history

Princess Margaret Hospital for Children (fmr), Subiaco demonstrate the earliest phase of development for the Princess Margaret Hospital as well as the changes that the medical facility has underwent since that time.

Princess Margaret Hospital for Children (fmr), Subiaco reflects the buoyant state economy during the Gold Boom period, as well as the growing public concern with public health matters, specifically relating to children, as evidenced by the public campaign by Moore to fund construction of the place.

11(b) Importance in demonstrating rare, uncommon or endangered aspects of Western Australia's heritage

Princess Margaret Hospital for Children (fmr), Subiaco is a rare surviving remnant from the earliest phase of development of Princess Margaret Hospital.

Princess Margaret Hospital for Children (fmr), Subiaco is a rare and intact example of a purpose built residential building providing housing for doctors and as early medical facilities at a major metropolitan hospital in the twentieth century.

11(c) Potential to yield information that will contribute to an understanding of Western Australia's history;

As a pair of extended but relatively undisturbed buildings, *Princess Margaret Hospital for Children (fmr), Subiaco* has the potential to provide information relating to the operation and residential life during the earliest years of the hospital's life.

11(d) Its importance in demonstrating the characteristics of a broader class of places;

Godfrey House is a fine example of the Federation Queen Anne style, which is skilfully designed to give separate identities to the two residential zones accommodated within the building, the large, ornate design a physical demonstration of the status accredited to Chief Medical Officers.

The Outpatients Building is a modest and picturesque example of the application of the Federation Bungalow style to a hospital building.

11(e) Any strong or special meaning it may have for any group or community because of social, cultural or spiritual associations;

Princess Margaret Hospital for Children (fmr), Subiaco has value for former patients and staff of Princess Margaret Hospital.

11(f)¹ Its importance in exhibiting particular aesthetic characteristics valued by any group or community;

Princess Margaret Hospital for Children (fmr), Subiaco occupies a minor landmark location at the corners of Hay Street, Roberts Road and Thomas Street.

11(g) Any special association it may have with the life or work of a person, group or organisation of importance in Western Australia's history;

Princess Margaret Hospital for Children (fmr), Subiaco is an example of a building designed by the Public Works Department of Western Australia, under the supervision of Chief Architect, Hillson Beasley, and an example of the work of Perth Architect J Ochiltree.

¹

For consistency, all references to architectural style are taken from Apperly, R., Irving, R., Reynolds, P. *A Pictorial Guide to Identifying Australian Architecture. Styles and Terms from 1788 to the Present*, Angus and Robertson, North Ryde, 1989.

For consistency, all references to garden and landscape types and styles are taken from Ramsay, J. *Parks, Gardens and Special Trees: A Classification and Assessment Method for the Register of the National Estate*, Australian Government Publishing Service, Canberra, 1991, with additional reference to Richards, O. *Theoretical Framework for Designed Landscapes in WA*, unpublished report, 1997.

Princess Margaret Hospital for Children (fmr), Subiaco has value for former patients and staff of Princess Margaret Hospital.

12. DEGREE OF SIGNIFICANCE

12.1 CONDITION

Godfrey House is in good condition, with a programme of conservation and restoration completed in 2004.

The Outpatients Building is generally well maintained and is in fair to good condition.

12.2 INTEGRITY

This section explains the extent to which the fabric is in its original state.

Godfrey House is generally highly intact with original elements extant, and more recent additions have been built in a manner that would allow their removal without damaging the original fabric of the building. However, some fabric has been modified or removed to allow for later construction.

The Outpatients Building retains the bulk of its original fabric, as well as cumulative changes reflecting the variety of uses to which the place has been put. Collectively these buildings have a medium to high level of integrity.

12.3 AUTHENTICITY

This section explains the extent to which the original intention is evident, and the compatibility of current use.

Princess Margaret Hospital for Children (fmr), Subiaco has a medium level of authenticity, as neither building used for their original purpose. However, Godfrey House is still capable of functioning as residential quarters and the Outpatients Building retains the capacity to demonstrate its original function and represent its values. Cumulative change has made the place more complex, reflecting the history of its uses, and has not, in the main, detracted from it.

13. SUPPORTING EVIDENCE

The documentation for this place is based on the updated Conservation Plan for Godfrey House prepared by Heritage and Conservation professionals and updated by Philip McAllister in 2018² and from an unpublished draft heritage assessment of Outpatients Building prepared by Griffiths Architects and Eddie Marcus, History Now, in 2017³, with amendments and/or additions by the Heritage Council and the Department.

13.1 DOCUMENTARY EVIDENCE

Princess Margaret Hospital for Children (fmr), Subiaco consists of the Old Outpatients' Building (1909) a timber framed and clad hospital building with a custom orb profile zincalume roof designed in the Federation Bungalow style, and Godfrey House (1913), a two storey painted brick and iron residential building in the Federation Queen Anne style, which together form the two oldest buildings within the Princess Margaret Hospital complex. At the time of assessment, the wider Princess Margaret Hospital site is scheduled for demolition. Together, these two places demonstrate the early establishment of the Princess Margaret Hospital as well as the social concern for public health in the early Twentieth Century.

The following documentary evidence is quoted directly from the Conservation Plan for Godfrey House prepared by Heritage and Conservation professionals in 2018, with additional information quoted directly from an unpublished draft heritage assessment of Outpatients Building prepared by Griffiths Architects and Eddie Marcus, History Now, in 2017. Minor textual amendments have been made for purposes of past and present tense in relation to the redevelopment of the building.

For most of the nineteenth century, the provision of health care services was a familial rather than a government responsibility. By 1880, the only government hospital was the Perth Colonial Hospital (now Royal Perth Hospital). Access to doctors was restricted to those who could afford their services.⁴

By the 1890s, private hospitals existed in several towns and suburbs throughout the state. Such hospitals were mostly funded through local sources as the government provided only limited financial assistance. Under the *Hospital Act* of 1894, hospitals could be administered by boards and funded by contributions. In practice, the only hospitals managed by boards were at Perth and Fremantle.⁵

A children's ward was added to the Perth Public Hospital (formerly known as the Colonial Hospital, and now Royal Perth Hospital) in 1900 to cater for sick children requiring hospital accommodation. The ward was not

² Heritage and Conservation Professionals, Philip McAllister Architect, *Godfrey House (Fmr Resident Medical Officers' Quarters) Princess Margaret Hospital for Children Roberts Road Subiaco Conservation Plan*, Department of Contract and Management Services, 2018 (updated from 2001 original).

³ Griffiths Architects, History Now, *Old Outpatients' Building, Princess Margaret Hospital for Children (1909)*, unpublished draft heritage assessment, Development WA, 2017

⁴ Kelly Aris and Helen Burgess, 'Health Services Thematic History and Schedule of Places: Health Department of Western Australia', prepared for Contract and Management Services on behalf of the Health Department of WA, June 2000, p. 28, as quoted in Heritage and Conservation Professionals & McAllister, *op cit.*, p. 16

⁵ Aris and Burgess, *op cit.*, p. 29, as quoted in Heritage and Conservation Professionals & McAllister, *op cit.*, p. 16

considered favourably because of its proximity to the Gas Company's chimney stacks and because it overlooked the morgue. The ward was a response to the high infant mortality rate at this time. For the same reason, the need for a maternity hospital was acknowledged.⁶

At the end of the nineteenth century, one out of ten children in the state died within their first year. A number of factors, such as the use of cow's milk in place of breast milk and an "impure and inadequate water supply" were believed to contribute to this appallingly high death rate.⁷

The need for a children's hospital was identified by the people of Perth. In 1897, a small girl visited Charles Moore's shop and was playing with a money-box. Mr Moore noticed that the child could not retrieve her three pennies from the money-box and asked her what she would like in place of them. The child is reported to have replied that the pennies should be donated to the Children's Hospital. Upon being told that there was no children's hospital she questioned why one did not exist. This event deeply affected Charles Moore who then embarked on a significant fund-raising campaign to establish a children's hospital. The idea gained an enormous amount of public support and various events were staged to collect donations for the hospital.⁸

In 1897, a Crown Grant was made for a Children's Hospital site. The site was on Mueller (later Roberts) Road, between Thomas and Hamilton Streets.⁹

By 1898 it appeared that sufficient funds had been raised for a hospital to be constructed. A competition held to design the hospital was won by G.J and E.J Clark. Unfortunately, when tenders were called the tender amount significantly exceeded the amount of funds raised and construction did not commence.¹⁰

It was not until almost ten years later, in 1907, that Charles Moore issued a challenge to the government to encourage support for the hospital. Moore effectively offered to match a government contribution pound for pound, not only for the construction costs but also as a contribution towards maintenance costs. This offer was accepted by the Premier, Newton

6 Aris and Burgess, *op cit.*, p. 37. Tom Stannage, *The People of Perth: A Social History of Western Australia's Capital City*, Perth City Council, Perth, 1979, p. 259. The King Edward Memorial Hospital for Women, Perth's Maternity Hospital did not open until 1915, as quoted in Heritage and Conservation Professionals & McAllister, *op cit.*, p. 16

7 Stannage, *op cit.*, pp. 104, 130 and 273, as quoted in Heritage and Conservation Professionals & McAllister, *op cit.*, p. 16

8 The story of the three pennies is described in detail in Battye's *op cit.*, pp. 107-109 and the 1909 Children's Hospital Report, as quoted in Heritage and Conservation Professionals & McAllister, *op cit.*, p. 16; "The Children's Hospital." *Western Mail* 12 June 1909: 34, as quoted in Griffiths Architects & History Now, *op cit.*, p. 5

9 Based on a c.1900 site plan. The area for the hospital was less than half the size of the area bounded by Mueller Road, Thomas, Hay and Hamilton Streets. Currently, the hospital occupies the entire parcel of land bounded by these streets. The site plan also indicates that there were several other reserves in this area, including reserves for the Salvation Army, a Trades Hall and a church. No title or date details on the map, State Records Office of WA, Acc 1647, PWD 16529. Battye, *op cit.*, p. 108, as quoted in Heritage and Conservation Professionals & McAllister, *op cit.*, p. 16

10 Battye, *op cit.*, p. 108, as quoted in Heritage and Conservation Professionals & McAllister, *op cit.*, p. 16

Moore.¹¹ Construction commenced shortly after government assistance was pledged.

It is likely that Charles Moore's challenge provided an ideal solution for the government. The significant amount raised by public donation was a clear indication that the people wanted a Children's Hospital; however, presumably the government did not wish to provide anything more than 'assistance' to the establishment of hospitals. Moore offering to match funds meant that the government could support the project without having to take fiscal or administrative control of it.

It is worth noting that the children's hospital cause does not seem to have been supported by prominent "townsmen and politicians".¹² There were three notable exceptions, Charles Moore, George Shenton and Harry Boan, who all gave generously to the cause. Although a Crown Grant was awarded in 1897 it appears that this was done under much duress. Even the normally glowing reports provided by Battye mention that this was awarded "after some hesitation".¹³ As noted by Tom Stannage, the funds raised for the hospital were the result of donations by Perth residents. With the contribution of, "thousands of ordinary families", the establishment of the Perth Children's Hospital "was the greatest achievement of the people of Perth in the goldrush years."¹⁴

The hospital was opened by the Premier, Newton Moore on 30 June 1909. The buildings were constructed by Atkins and Law at a cost of £6,472. Architects Hobbs, Smith and Forbes were paid £374 for their services.¹⁵

The first Medical Superintendent of the hospital was Dr Norman Good. Dr Good had previously worked in the Children's Hospital in Melbourne. In 1910, the position title was changed to Chief Resident Medical Officer.¹⁶

The design of the hospital was based on the cottage plan, otherwise known as the pavilion style. This related to the idea that hospital buildings should be of a domestic-scale with separate buildings for different types of patients so as to assist in isolating diseases within certain areas. Also central to the idea of the cottage plan was the importance of fresh air in the rehabilitation of patients. Verandahs were a common feature, as were large windows

-
- 11 Battye, *op cit.*, p. 108. That Charles Moore and the Premier shared the same surname is believed to be coincidental, as quoted in Heritage and Conservation Professionals & McAllister, *op cit.*, p. 17
- 12 Stannage, *op cit.*, p. 260. The Children's Hospital reports include many pledges of donations made by individuals, schools and other groups, as quoted in Heritage and Conservation Professionals & McAllister, *op cit.*, p. 17
- 13 Battye, *op cit.*, p. 108. Battye was one of the hospital trustees and presumably was very familiar with and frustrated by the delays in establishing the hospital, as quoted in Heritage and Conservation Professionals & McAllister, *op cit.*, p. 17
- 14 Stannage, *op cit.*, p. 260, as quoted in Heritage and Conservation Professionals & McAllister, *op cit.*, p. 14
- 15 'Report for the Perth Children's Hospital', 1909, as quoted in Heritage and Conservation Professionals & McAllister, *op cit.*, p. 17
- 16 'Report of the Children's Hospital and Training School for Nurses', 1910, p. 8, as quoted in Heritage and Conservation Professionals & McAllister, *op cit.*, p. 17

above patients' beds to assist with ventilation.¹⁷ These features were reflected in the designs for the original hospital wards.¹⁸

The first stage of the hospital included medical and surgical wards, each for 20 patients, an operating theatre, quarters for nurses and administration buildings. The number of patients quickly rose and additional accommodation was required.¹⁹

The first Outpatients' Building was located on the corner of Hay and Thomas Streets. Erected as part of the 1909 campaign, it was a weatherboard clad and iron building intended to be only temporary until sufficient funds had been obtained and a new design for the Thomas Street frontage had been agreed. A verandah was enclosed for the accommodation of prams and as an overspill waiting room, while the main waiting room was in the centre of the building. The work to enclose the verandah remains discernible. Other rooms, some of which may have been temporary lean-tos at this time, came off the waiting room and included the dispensary, for which a separate entrance was provided, the doctors' room, a nurses' room, and various treatment rooms. There was also an emergency operating theatre for minor surgery. Despite the temporary nature of the building, an early (non-medical) visitor was so enthused, they declared it was "so well fitted and finished off throughout that to the lay mind it appeared a model out-patients' department".²⁰

In November 1912, tenders were called for the second stage of the hospital including,

*two wards of 20 beds each, a wing to Nurses' Quarters, providing 29 rooms with wide verandahs and balconies, and a new kitchen with basement and cold store. In addition two-storey quarters for the principal and two assistant medical officers are being erected.*²¹

The tender from W. Atkins for £9,088 was accepted in December 1912.²² The drawings were prepared by the Public Works Department under the supervision of Hillson Beasley, the Chief Architect.²³

The residence was designed to include accommodation for the Chief Resident Medical Officer (CRMO) and two Assistant Resident Medical

-
- 17 The cottage plan principle is also referred to as the 'pavilion' or 'Nightingale' ward. This design originated from England from the 1850s and was used throughout other hospitals in Australia. Refer to Thom Blake, Michael Kennedy and Margaret Pullar, *Health Buildings in Queensland: an historical overview*, Asset Management Unit, Queensland Health, November 1997. See also Aris and Burgess, *op cit.*, pp. 29-30, as quoted in Heritage and Conservation Professionals & McAllister, *op cit.*, p. 17
- 18 These wards have since been demolished. Photographs of the wards exist in the Children's Hospital Annual Reports for 1909 and 1910, as quoted in Heritage and Conservation Professionals & McAllister, *op cit.*, p. 17
- 19 Battye, *op cit.*, p. 108, as quoted in Heritage and Conservation Professionals & McAllister, *op cit.*, p. 8
- 20 "The Children's Hospital" *Daily News* 30 June 1909: 7, as quoted in Griffiths Architects & History Now, *op cit.*, p. 6
- 21 Department of Public Works Annual Report 1912-13, p. 19, as quoted in Heritage and Conservation Professionals & McAllister, *op cit.*, p. 18
- 22 As the building was constructed as one of several hospital buildings, individual details about the cost of construction have not been included in the contract books, as quoted in Heritage and Conservation Professionals & McAllister, *op cit.*, p. 19
- 23 SROWA, Acc. 1647, PWD 16529, sheet 12, dated 5/11/1912. SROWA PWD 16764, as quoted in Heritage and Conservation Professionals & McAllister, *op cit.*, p. 19

Officers (ARMO). The CRMO was responsible for all patients in the hospital, although honorary specialists and the ARMOs also provided medical attention to the patients. The CRMO and the ARMOs were required to be in close proximity to the hospital in case of an emergency and therefore accommodation was provided.²⁴ The building was completed by July 1913. One of the original occupants of the building was probably Dr J.S. Pearson, the CRMO from January 1913. Part of Dr Pearson's salary of £500 per annum included quarters and it is possible he was accommodated in another part of the hospital until the Resident Medical Officers' Quarters were completed in mid-1913.²⁵

The works were jointly funded by the Hospital and the government. The government also assisted by arranging the works through the Public Works Department. It appears that the first stage of works was administered by the Hospital.²⁶

In the absence of ongoing government funding, the Hospital was still reliant on public donations and subscriptions for costs associated with maintaining the hospital. A Cot Endowment Fund was created to encourage people and organisations to sponsor the cost of keeping beds for patients. Sponsored cots were marked with appropriate signage noting the generous benefactors. Lists of subscriptions and donations and impassioned pleas for funds were included in the annual reports. For example, the following was included for several years in a row:

*To those who do not know the Hospital let us suggest one visit. It will indeed open our eyes and hearts, and we trust unloose your purse strings.*²⁷

The Children's Hospital obviously filled a need in the treatment of children. The number of patients rose dramatically and the daily average number of patients swelled exponentially. For example, in 1909-10, 492 patients were admitted to the wards. By 1912-13 this number had increased to 1,125. Similarly, attendance numbers of outpatients in 1909-10 was 9,616 but by 1912-13 had risen to 22,197.²⁸

The outbreak of World War I prevented any new development, but in 1918 discussion again arose as to the need for a new Outpatients' Building. What had been described as a 'model' building in 1909 was now seen as little more than a primitive 'outback hut'. The outpatients were charged 1/-, if their guardian or parents could afford to pay, otherwise treatment was free. This

-
- 24 Refer to Perth Children's Hospital Annual Reports, 1910s, as quoted in Heritage and Conservation Professionals & McAllister, *op cit.*, p. 19
 - 25 SROWA AN 7/14, Acc. 1124, Item 10. PWD Contract Book 1910-1913, Contract Number 4773, as quoted in Heritage and Conservation Professionals & McAllister, *op cit.*, p. 19
 - 26 Department of Public Works Annual Report 1912-13, p. 19, as quoted in Heritage and Conservation Professionals & McAllister, *op cit.*, p. 18
 - 27 Children's Hospital Reports for 1912, 1913 and 1914. This may have also been included in other reports. Further information about the financial difficulties of the hospital in raising funds is included in Marshall. *op cit.*, pp. 40-42. Children's Hospital Report for 1913, p. 7, as quoted in Heritage and Conservation Professionals & McAllister, *op cit.*, p. 18
 - 28 Children's Hospital Report for 1913, p. 7, as quoted in Heritage and Conservation Professionals & McAllister, *op cit.*, p. 18

is all the more impressive when it is realised that drugs could cost more than 10/- a patient.²⁹

The office and waiting room were described as a 'closed-in verandah' (or sometimes as a lean-to) with a galvanised roof, which may suggest some reorganisation of the building's use since 1909. Being constructed of weatherboard, lath and plaster, permitted little in the way of hygienic cleaning necessary in such a department. In any case, the number of outpatients had risen to 24,000 a year, six times the initial forecast use for the Outpatients' Building.³⁰

In the main interior waiting hall, the sister-in-charge would interview the mothers and children, and this hall opened onto the various doctors' rooms. The small theatre was still in operation at this time, with around 30 operations a day. The dispensary also continued to be located here.³¹

Now that the war was over, it was said, such an Outpatients' Building was not only inadequate, it was a "constant and burning reproach to our State". Tales of 'suffering children' were regularly in the newspapers to encourage donations for a new building.¹¹ As it turned out, thanks to significant fundraising by the Ugly Men's Association, a new Outpatients' Building was opened in 1921, adjacent to the first weatherboard building.³²

The Ugly Men's Voluntary Worker's Association of Western Australia Inc., generally shortened to the Ugly Men's Association or Ugly Men was a uniquely Western Australian fund-raising and charitable organisation established in 1917. Previously, a Mrs. Alicia Pell had organised an "Uglie Man" competition to raise funds for the Red Cross in Kalgoorlie. The East Perth Football Club then built on the concept to raise funds for the Perth Children's Hospital and the War Patriotic Fund. The football club's work developed into a successful grassroots organisation with the first branch opening in the Perth suburb of Mount Lawley and focusing on supporting cases of hardship caused by war.³³

The new premises were erected for £6,686 by Totterdell Bros., to plans by architect J. L. Ochiltree. Although much larger than the 1909 building, it was still designed on the principle of a central reception room. However, the surgery ward, while under the same roof, was now a distinct section and patients could enter and leave without being seen by children waiting medical attention.³⁴

-
- 29 "Children's Hospital" *Primary Producer* 20 December 1918: 1, as quoted in Griffiths Architects & History Now, op cit., p. 6
- 30 *ibid.*
- 31 "Children's Hospital." *West Australian* 9 January 1919:8; This figure is given as reported, but seems more probably a monthly rather than daily number. As quoted in Griffiths Architects & History Now, op cit., p. 6
- 32 "Children's Hospital" *Primary Producer* 20 December 1918: 1, as quoted in Griffiths Architects & History Now, op cit., p. 7
- 33 *A history of the Ugly Men's Voluntary Worker's*. Rita Farrell (1993). Honours thesis. Murdoch University, as quoted in Griffiths Architects & History Now, op cit., p. 7
- 34 "Children's Hospital." *Western Mail* 27 October 1921: 16, as quoted in Griffiths Architects & History Now, op cit., p. 7

It remains unclear as to the use of Outpatients' Building for the next decade, but in 1932 it was renovated throughout by the Children's Hospital Women's Auxiliary, at their own expense, and converted into their headquarters.³⁵ Founded in 1930, the Auxiliary originally worked from a room elsewhere in the hospital before needing larger accommodation. The entrance of Outpatients' Building now opened into a large room, the former main waiting room, with a long table. Here, members cut fabric for pyjamas, gowns, nightdresses, jumpers, caps, feeders, bed jackets, gowns for convalescents, nurses uniforms, and doctors' gowns. These were then sewn in the 'inner room', on one of four sewing machines.³⁶

Various additional buildings were constructed at the hospital between 1913 and the 1950s as patient numbers dictated and available funds allowed.³⁷

During World War II there was a severe shortage of staff at the hospital as Australians were encouraged to contribute to the war effort.³⁸ Married women doctors commonly worked in place of men doctors and by 1941, four out of the five resident doctors were women.³⁹

The number of resident medical staff had increased since the original construction in 1912-13. Additional facilities were required to accommodate the increased number of staff. In October 1944, the Public Works Department accepted a tender from Nissen and Mills to construct an additional wing to the Resident Medical Officers' Quarters. The work included converting the former servant's room to a new bedroom as well as a bedroom immediately south of this. Two additional new bedrooms were added immediately above these rooms. The work also involved remodelling the two bathrooms along the western side of the building. A verandah and balcony extended in front of the new rooms. The work was completed in March 1945 at a cost of £1,167.⁴⁰ Between 1944 and 1955, further additions were made to the south-west corner of the building, presumably additional bedrooms and the external staircase.⁴¹

The Auxiliary appear to have occupied the Outpatients' Building until after WWII, when it was converted into a psychiatric clinic by medical superintendent, Dr. A. R. Edmonds. This facility, opened in 1948, was, at the

-
- 35 "Children's Hospital." *West Australian* 2 February 1932:4, as quoted in Griffiths Architects & History Now, *op cit.*, p. 7
- 36 "Four Trying Years of Achievement" *Daily News* 29 June 1933: 9, as quoted in Griffiths Architects & History Now, *op cit.*, p. 7
- 37 As a majority of the early hospital buildings have been demolished, the construction dates of all buildings between the 1910s and 1970s have not been determined as part of this study. A brief examination of the aerial photograph from the early 1970s allows the reader to gain a sense of the substantial redevelopment of the site, as quoted in Heritage and Conservation Professionals & McAllister, *op cit.*, p. 18
- 38 Staff shortages during the war were common in all industries. Jenny Gregory (ed.). *On the Homefront: Western Australia and World War II*, UW A Press, Nedlands, 1996, p. 84, as quoted in Heritage and Conservation Professionals & McAllister, *op cit.*, p. 18
- 39 Marshall, *op cit.*, p. 70, as quoted in Heritage and Conservation Professionals & McAllister, *op cit.*, p. 18
- 40 SROWA AN 7/14, Acc. 1124, Item 22, PWD Contract Book 1939-1945, Contract Number 9342, as quoted in Heritage and Conservation Professionals & McAllister, *op cit.*, p. 18
- 41 An extract from a Metropolitan Water Supply plan #1522, revised February 1955, indicates that the building had been added to. Plan held in the Engineer's Store, Princess Margaret Hospital. Also. PWD drawing 35789, 'New Classroom', July 1957 confirms that the additions had been carried out by the mid-1950s. CAMS Information Centre, 23/24/0, book 5, as quoted in Heritage and Conservation Professionals & McAllister, *op cit.*, p. 18

time, the only properly constituted clinic of its kind in the State and the first of any kind to operate in Western Australia since 1930. Staffed by two part-time psychiatrists and one full-time psychologist, the department was to deal with "gross deficiencies" as well as being a consultation clinic.⁴²

In 1949, the Perth Children's Hospital was renamed Princess Margaret Hospital.⁴³

By the 1950s, new approaches to patient care meant that the original wards came to be regarded as substandard. Planning for new facilities began in earnest.⁴⁴

From the 1960s, a program of redevelopment of the hospital commenced. In 1964, a new outpatients block was constructed and in 1969 a new main ward block was completed. With the construction of the General Services Block in 1979 and the first stage of the main block completed in 1983 (the Patient Services Building), the majority of the original hospital buildings were demolished. By the second stage of this final redevelopment (the Charles Moore building) in 1987 the only building remaining from 1909 was the Outpatients' Building on the corner of Thomas and Hay Streets.⁴⁵

In 1988, the Outpatients' Building was converted for use as a Multi Faith Centre, providing a place to go for spiritual reflection, prayer and quiet time.⁴⁶ It was around this time that the 1909 building was dedicated as a chapel.⁴⁷

In 2008, the State Government announced a new children's hospital to replace Princess Margaret Hospital for Children, at the corner of Winthrop Avenue and Monash Avenue, Nedlands, within the Queen Elizabeth II Medical Centre site. In January 2012, then Premier Colin Barnett and Minister for Health, Dr Kim Hames, held a sod-turning ceremony to mark the beginning of the construction. The new hospital would use the original 1909 name, Perth Children's Hospital, to promote "Perth as a major centre for medical health and medical research."⁴⁸ The new Perth Children's Hospital was opened in May 2018.⁴⁹

-
- 42 "New Hospital Clinic to be as Good as Any" Daily News 13 November 1948: 5, as quoted in Griffiths Architects & History Now, *op cit.*, p. 7
- 43 McLeod, *op cit.*, p. 9, as quoted in Heritage and Conservation Professionals & McAllister, *op cit.*, p. 18; "Royal Name for Hospital" West Australian 24 December 1948: 9; "News and Notes" West Australian 27 January 1949:2, as quoted in Griffiths Architects & History Now, *op cit.*, p. 8
- 44 Dr Bob Godfrey mentions the inadequacy of the wards for some patient treatments. For example, tubercular patients were often housed on the verandahs. Also, Dr Godfrey mentions that the hospital staff had to arrange for one of the buildings to be condemned to justify them not using it. Refer to the oral histories from 1990 and 1995 held at the PMH Archives, as quoted in Heritage and Conservation Professionals & McAllister, *op cit.*, p. 19
- 45 McLeod, *op cit.*, p. 9, as quoted in Heritage and Conservation Professionals & McAllister, *op cit.*, p. 19
- 46 'Family Handbook' (Princess Margaret Hospital, 2008), as quoted in Griffiths Architects & History Now, *op cit.*, p. 8
- 47 McLeod, *op cit.*, p. 9, as quoted in Heritage and Conservation Professionals & McAllister, *op cit.*, p. 19
- 48 "New Children's Hospital Project" Department of Health, Government of Western Australia (2008), as quoted in Griffiths Architects & History Now, *op cit.*, p. 8
- 49 "History and Design", *Perth Children's Hospital, Government of Western Australia Child and Adolescent Health Service* website, accessed 10 September 2020, <https://pch.health.wa.gov.au/About-us/History>

The Princess Margaret Hospital was closed in June 2018, including the closure of both Godfrey House and the Outpatients Building. In 2020, the larger hospital site is being prepared for demolition and remediation, and the adaptive reuse of the remaining buildings *Princess Margaret Hospital for Children (fmr), Subiaco*.⁵⁰

13.2 PHYSICAL EVIDENCE

Princess Margaret Hospital for Children (fmr), Subiaco consists of the Old Outpatients' Building (1909) a timber framed and clad hospital building with a custom orb profile zincalume roof designed in the Federation Bungalow style, and Godfrey House (1913), a two storey painted brick and iron residential building in the Federation Queen Anne style, which together form the two oldest buildings within the Princess Margaret Hospital complex. At the time of assessment, the wider Princess Margaret Hospital site is scheduled for demolition. Together, these two places demonstrate the architectural style popular in the Federation period, as well as the ongoing expansion and reuse of the buildings as the larger Hospital site developed.

Outpatients Building

The following physical evidence is quoted directly from the unpublished draft heritage assessment of Outpatients Building prepared by Griffiths Architects and Eddie Marcus, History Now, in 2017, with minor textual amendments to the name of the place and for the purposes of past and present tense in relation to the redevelopment of the building.⁵¹

Outpatients' Building is a small timber framed and weatherboard clad building with a custom orb zincalume roof constructed in a simple domestic Federation Bungalow style, located on the busy Thomas and Hay street junction in Subiaco. It is in the eastern part of a much larger complex of buildings that make up Princess Margaret Hospital for Children and functions as the Multi Faith Centre. It is the oldest building remaining at the site.

The land around Outpatients' Building is part paved with bitumen and concrete paving slabs, and part landscaped, with lawns, bed planting and trees, such as Canary Island Palms (*Phoenix camariensis*) and Lemon Scented Gums (*Corymbia citriodora*). Notwithstanding that the landscaping somewhat obscures the presentation of the building, Outpatients' Building retains a picturesque quality when viewed from both Thomas and Hay streets.

The building has a rectangular plan form, framed in timber with weatherboard clad walls, timber double hung sash windows with hopper lights over them, part timbered and rendered and pebble dash rendered gables, and steeply pitched roofs covered with a custom orb profile zincalume roofing. The roof features vented gables, pebble dash rendered gables, and restrained decorative timber work... The walls also feature high

⁵⁰ "Perth Children's Hospital ED opens, PMH closes doors", *Healthy WA*, Department of Health website, accessed 10 September 2020, <https://www.healthywa.wa.gov.au/en/News/2018/Perth-Childrens-Hospital-ED-opens-PMH-closes-doors>; "Subi East: Overview", *Development WA* website, accessed 10 September 2020, <https://developmentwa.com.au/projects/residential/subi-east/overview>

⁵¹ Griffiths Architects & History Now, *op cit.*, pp. 8-10

level hooded vents. External doors are panelled and glazed, with hopper lights over them. The northern entry doors and flanking windows have stained glass leadlights, and these make use of bush and animal themes, and would appear to date from the time of the conversion of the place...

Taken as a whole, the building is reminiscent of the cottage hospital design using some of the language of the Federation Bungalow style. It is a domestic style and scaled environment applied to an institution.

There is an infilled verandah to the south which would appear to be a longstanding change as noted in the documentary evidence. There is an attached walkway to the north, ramps, surface mounted services, fencing and gates, ramps, and the like that detract from the presentation of the place.

The timber construction verandah floor on the north side of the building has been removed and a concrete paver floor substituted for the timber construction. There is evidence of alterations through time to some of the external fabric, with differing types of weatherboards in various locations, the introduction of air conditioning and other services.

The building is entered from the north via a verandah, with minor entries to the east and western ends of the verandah. The main entrance is directly into the chapel, the largest space in the centre. The chapel, the original waiting room, is flanked by four office spaces, two to the east and two to the west, then a kitchen to the south-west, Muslim prayer room behind the chapel, and cleaners' store and toilet in the south-east corner. The chapel has high ceilings, an altar on the southern wall and light is via the stained-glass lights to the northern side.

The chapel has carpeted timber floors, deep plain skirtings, plain architraves, lath and plastered walls and ceilings, all with coved junctions for reasons of hygiene, four panelled doors, and various penetrations for air conditioning. There is a bronze plaque on the north wall recording various uses of the building over time and commemorating its opening for its present use in 1988.

The offices, formerly nurses', doctors' and treatment rooms, use the same materials and expression, and are well lit by pairs of windows in each wall, which means that corner rooms have four windows, rendering them very bright and in addition to the features in the chapel, there are high level cast plaster wall vents.

The Muslim prayer room to the south was created by filling in a verandah initially for pram parking, so that apart from two doors into it, there is a window also. The prayer room has no special features. The kitchen to the south-west, cleaners store and toilet are original rooms, with contemporary finishes and fittings.

The kitchen retains the original room shape and majority of finishes, while the cleaner's store and toilets were created by dividing a room of the same plan as the kitchen.

The building has been subject to some movement and there is fine cracking in a number of locations, with some larger cracks in a very small number of

locations, the interior is well maintained and in good condition. It would appear that the fabric is largely authentic and the change has been cumulative, leaving the underlying history of the built fabric as a continuum.

Godfrey House

The following physical evidence is summarised from the Conservation Plan for Godfrey House prepared by Heritage and Conservation professionals in 2018 with minor textual amendments to the name of the place and for the purposes of past and present tense in relation to the redevelopment of the building.

Godfrey House is one of a complex of buildings comprising the Princess Margaret Hospital for Children, located on the corner of Thomas Street and Roberts Road, Subiaco.... The building is situated on a flat triangular area of ground at the north eastern corner of the hospital site, near the intersection of Thomas Street and Roberts Road.⁵²

The main structure of Godfrey House, a substantial two storey Federation Queen Anne style residential building, was constructed in three stages. The original stage (1913) comprises the main northern and eastern wings of the building. The south western wing of the building was constructed subsequently in two stages in 1944 and circa 1950s. The 1944 section of the building consists of a new room to the south of the original servant's room and two new rooms at first floor level. The roofline continued the original 1912 roofline, and the structure exhibits only minor differences in construction and detail from the original section. The circa 1950s section was added to the south of the 1944 addition, and comprises three rooms at ground floor level, three rooms at first floor level and an ablution block. The 1950s addition relates to the style and detail of the original, but is clearly evident as an addition, having a lower roofline and more contemporary detailing.⁵³

Two framed construction buildings have been added adjacent to Godfrey House on the southeast and east of the main building. The dates of construction of these additions were not able to be established through documentary research, however, they are believed to have been constructed circa 1980.⁵⁴

The original section of Godfrey House was designed in the Federation Queen Anne style, popular for residential buildings of the period. This style influenced subsequent additions to the building. The building is a two-storey, red brick building, painted white on all but one of its facades. It has a roof of painted corrugated iron sheeting. The building was planned as an L-shaped structure, with two attached residences - the east wing for the Chief Resident medical Officer (CRMO) and the north wing for the Assistant Resident Medical Officers (ARMOs). Each wing had its own formal entrance. The eastern façade was dominant as the main entrance to the CRMO's Residence. Attention was also given to the northern façade, however, as the entrance to the ARMOs' accommodation. The two wings of the building enclosed a shared kitchen, scullery and servant's area to the

52 Heritage and Conservation Professionals & McAllister, *op cit.*, pp. 34-35

53 Heritage and Conservation Professionals & McAllister, *op cit.*, p. 34

54 *ibid.*

south west. The interior spaces of the two residences were not interconnected, and both areas had staircases to bedrooms on the first floor.⁵⁵

Godfrey House is typical of residential buildings designed in the Federation Queen Anne Style with the main structure further articulated by the use of smaller wings, bays and chimneys to achieve a picturesque or asymmetrical composition. The asymmetry of the composition is given additional emphasis by the use of a variety of roof shapes to cap the projecting wings and bays. The style helps to satisfy the requirement for the building to be read on both the eastern and northern facades.⁵⁶

The eastern was originally designed as the main face of the building but has subsequently been obscured by recent framed structures. It is asymmetrical in composition with a projecting bay that sits below the main gable. The walls of the east façade are of painted stretcher bond brickwork which is characteristic of all the walls of the original 1913 sections of the building. Horizontal bands of smooth render divide the walls. The lowest band forms a plinth, the uppermost band forms a cornice to the wall and the two intermediate bands are at window sill level.⁵⁷

The windows are timber framed double hung sashes with the upper sash having six panes and the lower sash single paned. This is typical of all the windows in the original part of the building. Each window opening is surmounted by a segmental arched head and has a rendered sill. Double doors with openings surmounted by segmental arched heads lead onto the first floor verandah. The doors are half-glazed French type with a glazed fanlight over.⁵⁸

A two-storey verandah extends for the full length of this façade and wraps around both the south-east and the south-west corners of the building and around the projecting bay. The upper level of the verandah is of timber construction with timber floorboards and stop chamfered posts with balustrading of square balusters spanned by moulded handrails. The valance of the first floor verandah has a segmental cut-out and is supported at the verandah posts on elongated triangular shaped timber brackets. The ground floor level of the verandah has a granolithic floor and a timber lattice work valance spanning under the upper level floor. The ground floor valance is supported at the posts on timber brackets that match those above. The northern half of the lower verandah has been enclosed with fibrous cement sheeting clad stud walls to form bathrooms and a connection between Godfrey House and the single-storey, lightweight construction building to the west. The original front door has been removed and an opening created between the original 1913 building and the extension.⁵⁹

55 Apperly, Irving, Reynolds *op cit.*, pp. 132-135; Heritage and Conservation Professionals & McAllister, *op cit.*, p. 40

56 *ibid.*

57 Heritage and Conservation Professionals & McAllister, *op cit.*, p. 41

58 *ibid.*

59 *ibid.*

The building has a gabled roof, with a pitch of approximately 45 degrees. Ridges over the eastern and northern wings run in a north/south and an east/west direction with a raised hipped section of roof over the northern end of the east elevation. The ridge of this section of roof features iron finials. An integral broken pitch roof extends over the verandahs. The gables on the east and north façades are edged by timber bargeboards that project approximately 450mm beyond the wall below. The gables are roughcast rendered, set slightly forward of the main wall structure and supported on timber corbel brackets. A fixed louvre roof vent is located centrally between the two gabled wings on the north facade.⁶⁰

The roof of the eastern wing of the building terminates as a gable on the southern façade. This gable is similar in construction to the other gables on the building, but it is given additional strength by the inclusion of a chimneystack. The centreline of the chimneystack bisects the gable and aligns with the ridge of the roof. The building has several chimneys which are of unpainted, red brickwork with a single course of decoratively moulded corbelling. Above the corbelling is a band of roughcast render which is capped by a single moulded brick corbel. The gutters are galvanised iron ogee profile and the downpipes are round galvanised iron. The roof of the western additions appears to be painted corrugated asbestos cement sheeting.⁶¹

Generally, the original internal planning of Godfrey House remains extant, as does that of the later additions. Significant changes have included the removal of the staircase from the Assistant Resident Medical Officers' (ARMOs) accommodation; and the removal of some internal walls on the ground floor, to create larger rooms and provide greater inter-connection between the two formerly self-contained parts of the building.⁶²

13.3 COMPARATIVE INFORMATION

Health Services

The documentary evidence indicates that *Princess Margaret Hospital for Children (fmr)*, *Subiaco* are extant Federation era buildings servicing the earliest stages of Princess Margaret Hospital, and as such demonstrate the development of public health services at this time. A search of the Historic Heritage database for places built between 1890-1915 with the use "Health" returns 188 places, of which 49 are on the State Register of Heritage Places (RHP).⁶³ The places most comparable to *Princess Margaret Hospital for Children (fmr)*, *Subiaco* in demonstrating this Gold Boom development of public health include:

- P2050 *Perth Chest Clinic* (RHP): established at Perth in 1902, this brick and iron building is associated with the public health response to tuberculosis and is rare as the only dedicated chest clinic in the State.
- P2053 *Chief Secretary/Public Health Department (fmr)* (RHP): established at Perth in 1912, this ornate Federation style building was constructed to

⁶⁰ Heritage and Conservation Professionals & McAllister, *op cit.*, p. 40

⁶¹ *ibid.*

⁶² Heritage and Conservation Professionals & McAllister, *op cit.*, p. 57

⁶³ This date range is based upon the periods used in Apperly, *et al.*, *op cit.*

house the newly-created Public Health and Medical Department, to administer the 1911 *Health Act*.

- P2176 *Edward Millen Home (fmr)* (RHP): established at Victoria Park in 1912, this complex includes the Rotunda Hospital, the earliest purpose built women's hospital in the state. This hospital, established by midwife Elizabeth Baillie, was established to provide women with an alternative to home birth, and demonstrates the growing public concern with provision of health services.
- P2286 *District Medical Officer's Quarters (fmr)* (RHP): established at Port Hedland in 1907, this timber framed building is a rare example of a Federation Bungalow style Medical Officer's quarters, adapted for conditions in the state's northwest. The place is the earliest public health building in Port Hedland.
- P3228 *Swanbourne Hospital Conservation Area* (RHP): established in Claremont in 1904, this complex of hospital buildings demonstrates the public acknowledgement and development of treatment for mental health in the early Twentieth Century.
- P3374 *Sunset Hospital* (RHP): established at Dalkeith in 1904-1906, this hospital complex is the largest intact Twentieth century public health facility in the state, demonstrating the planning and design that went into public health in the early Twentieth Century. The former Doctor's and Staff Accommodation was not included in this registration.
- P4289 *Royal Perth Hospital Heritage Precinct* (RHP): established in Perth in 1855, this hospital complex underwent dramatic expansion in the Gold Boom period, including Kirkman House (1909), purpose built nurses' quarters, and the original Colonial Hospital (1855). The precinct is significant as the earliest purpose built hospital, demonstrating the evolution of medical care in the state.
- P13630 *Graylands Hospital* (RHP): established in Claremont 1910-1911 and including remnant buildings established in 1904, this brick and tile hospital building demonstrates the public acknowledgement and development of treatment for mental health in the early Twentieth Century.
- P2438 *King Edward Memorial Hospital for Women* (RHP): established at Subiaco in 1897 as an Industrial School for Girls, and converted into a woman's hospital in 1916.

This comparative search demonstrates that while there are a number of comparative examples to *Princess Margaret Hospital for Children (fmr)*, *Subiaco* associated with the overall theme of "Health," the place is relatively rare in retaining physical buildings, in particular rare as a demonstration of medical residential accommodation and outpatient services from the early twentieth century. The place is unique in being the first facility in the state established to support child health services.

This comparative search further demonstrates the wider economic change that Western Australian underwent during the Gold Boom, the sudden new wealth funding the rapid expansion of state government services. A search of the Historic Heritage database for places built between 1890-1915 with the use "Governmental"

returns 493 places, of which 148 are listed on the State Register of Heritage Places (RHP). These service buildings include post offices, court houses, fire stations, police stations, goals, schools, customs houses, mine offices, a museum, gallery, and mint, medical or hospital buildings, and accommodation for various government officials.

Federation Queen Anne

The physical evidence indicates that Godfrey House, while undergoing a number of extensions, retains its original core building as a medium sized example in a fine application of the Federation Queen Anne style. A search of the historic heritage database for buildings in the Federation Queen Anne style returns 691 places, of which 94 are entered on the RHP. These places include private residences, education buildings, religious buildings, government buildings and public buildings. There are a total of 15 places from within this group of 94 which are comparable to Godfrey House as the Federation Queen Anne style buildings put to a government use:

- P51 *Albany Courthouse Complex* (RHP): established at Albany in 1897 and continuously redeveloped since that date, this complex of government buildings includes the Lockup and Keeper's Quarters and Sergeant's Quarters, both considered fine examples of Federation Queen Anne style.
- P1880 *The Residency* (RHP): established in Northam in 1909, this single storey Resident Magistrate's residence is considered a fine example of government-designed Federation Queen Anne style architecture.
- P2081 *1 Museum Street* (RHP): built in Northbridge in 1897, this place is a mirrored pair of two storey houses, considered to be of landmark quality.
- P2417 *Maylands Police Station and Quarters* (RHP): established at Maylands in 1908, this building is a rare and highly intact example of the Federation Queen Anne style applied to a police station.
- P3235 *Hills Residence (fmr)* (RHP): established 1895 at East Perth, a fine example of a two-storey Federation Queen Anne style residence built during the Gold Boom.

Federation Bungalow

The physical evidence indicates that the Outpatients Building, despite changes in use over time, is still recognisable as a small, modest example of the Federation Bungalow style as applied to a non-private residential building. A search of the historic heritage database for buildings in the Federation Bungalow style returns 1380 places, of which 82 are entered on the RHP. These places include private residences, education buildings, religious buildings, government buildings and public buildings. There are four places from within this group of 82 which are comparable to Outpatients Building as including small, modest examples of the Federation Bungalow style as applied to a non-private residential building:

- P2722 *Wickepin Nursing Post* (RHP): established by the Public Works Department in 1926 at Wickepin, this small, utilitarian hospital building demonstrates Federation Bungalow style influences.

- P3314 *Old Hospital Complex* (RHP): established by the Public Works Department at Margaret River in 1924, this complex of buildings is a modest rendition of the Federation Bungalow style.
- P4282 *Highgate Hill Police Station, Lockup and Quarters (fmr)* (RHP): a complex of police buildings established by the Public Works Department at Highgate 1897-1916 in the Federation Bungalow style.
- P7596 *Claremont Primary School Precinct* (RHP): a complex of school buildings established by the Public Works Department in 1893 and continuously developed since that date, includes buildings with a Federation Bungalow influenced style.

Architects

The documentary evidence indicates that the original 1909 Outpatients Building and the original 1913 Godfrey House were designed by the Public Works Department, which at the time was under the guidance of Chief Architect Hillson Beasley. A search of the historic heritage database for places associated with the Public Works Department returns 185 places, of which 75 are entered on the RHP. These places include education buildings, government buildings, public buildings and infrastructure places.

Another search of the historic heritage database for places associated with Beasley returns 86 places, of which 66 are entered on the RHP. The places comparable to *Princess Margaret Hospital for Children (fmr)*, *Subiaco* as government provision of health care places during the Gold Boom have already been described above.

The documentary evidence further indicates that the 1921 extension to the Outpatients Building was designed by J L Ochiltree. A search of the historic heritage database for places associated with Ochiltree returns 27 places, of which 13 are entered on the RHP. These places include private residences, government buildings, public buildings and religious buildings. Ochiltree's work touches on a number of styles, however his work appears to favour ornate, substantial buildings on main streets. None of these 27 places are comparable to *Princess Margaret Hospital for Children (fmr)*, *Subiaco*.

Conclusions

The comparative evidence indicates that *Princess Margaret Hospital for Children (fmr)*, *Subiaco* is representative of the growing public demand for and government provision of public health, funded by the buoyant Gold Boom economy. Further to this, *Princess Margaret Hospital for Children (fmr)*, *Subiaco* is rare as a place that physically demonstrates the early stages of a hospital complex and accommodation for medical staff.

Princess Margaret Hospital for Children (fmr), *Subiaco* includes a representative example of a fine, medium sized Federation Queen Anne style building, as well as a representative example of a small, modest example of a Federation Bungalow style building. Collectively these two buildings are representative examples of the architectural design of the Public Works Department, PWD Chief Architect Hillson Beasley and private architect J Ochiltree.

13. 4 KEY REFERENCES

Heritage and Conservation Professionals, Philip McAllister Architect, *Godfrey House (Fmr Resident Medical Officers' Quarters) Princess Margaret Hospital for Children Roberts Road Subiaco Conservation Plan*, Department of Contract and Management Services, 2018 (updated from 2001 original)

Griffiths Architects, History Now, *Old Outpatients' Building, Princess Margaret Hospital for Children (1909)*, unpublished draft heritage assessment, Development WA, 2017

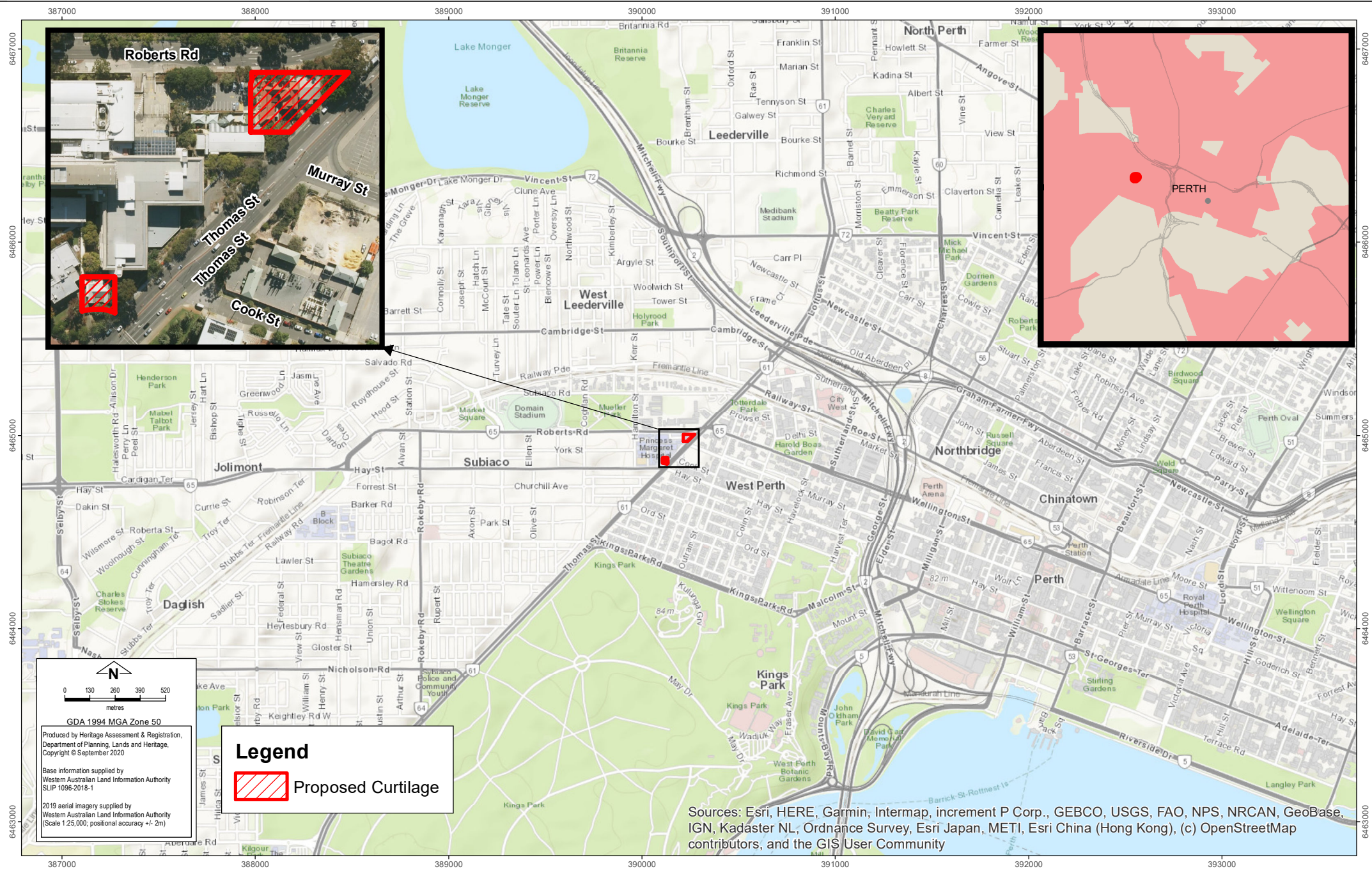
13. 5 FURTHER RESEARCH



HERITAGE
COUNCIL

HC LOCATION MAP P5568-1 Princess Margaret Hospital for Children (fmr), Subiaco

PREPARED BY DANIEL HOLLAND (SENIOR LAND INFORMATION OFFICER) 25/09/2020



6465000

6465000

Roberts Rd

Murray St

Thomas St

Thomas St

Cook St

Hay St

0 6 12 18 24
metres

GDA 1994 MGA Zone 50

Produced by Heritage Assessment & Registration,
Department of Planning, Lands and Heritage,
Copyright © September 2020

Base information supplied by
Western Australian Land Information Authority
SLIP 1096-2018-1

2018 aerial imagery supplied by
Western Australian Land Information Authority
(Scale 1:949; positional accuracy +/- 2m)

Legend



Proposed Curtilage



Cadastre

